

Legend

- Keel plank, stern- and stem hooks, stern- and stemposts, mast step
- Bottom planking
- Planking of the sides
- Ceiling, inwale
- Frames
- Detached timbers

- Erratic stones / net weights
- Cross-cut wood
- Broken-off frame
- Frame number

Field drawing

The wreck with the detached timbers *in situ*.

A. The wreck



Legend

- Keel plank, stern- and stem hooks, stern- and stemposts
- Bottom planking
- Planking of the sides
- Ceiling
- Frames, mast step, inwale
- Detached timbers
- Cross-cut wood
- Broken-off frame
- Frame number

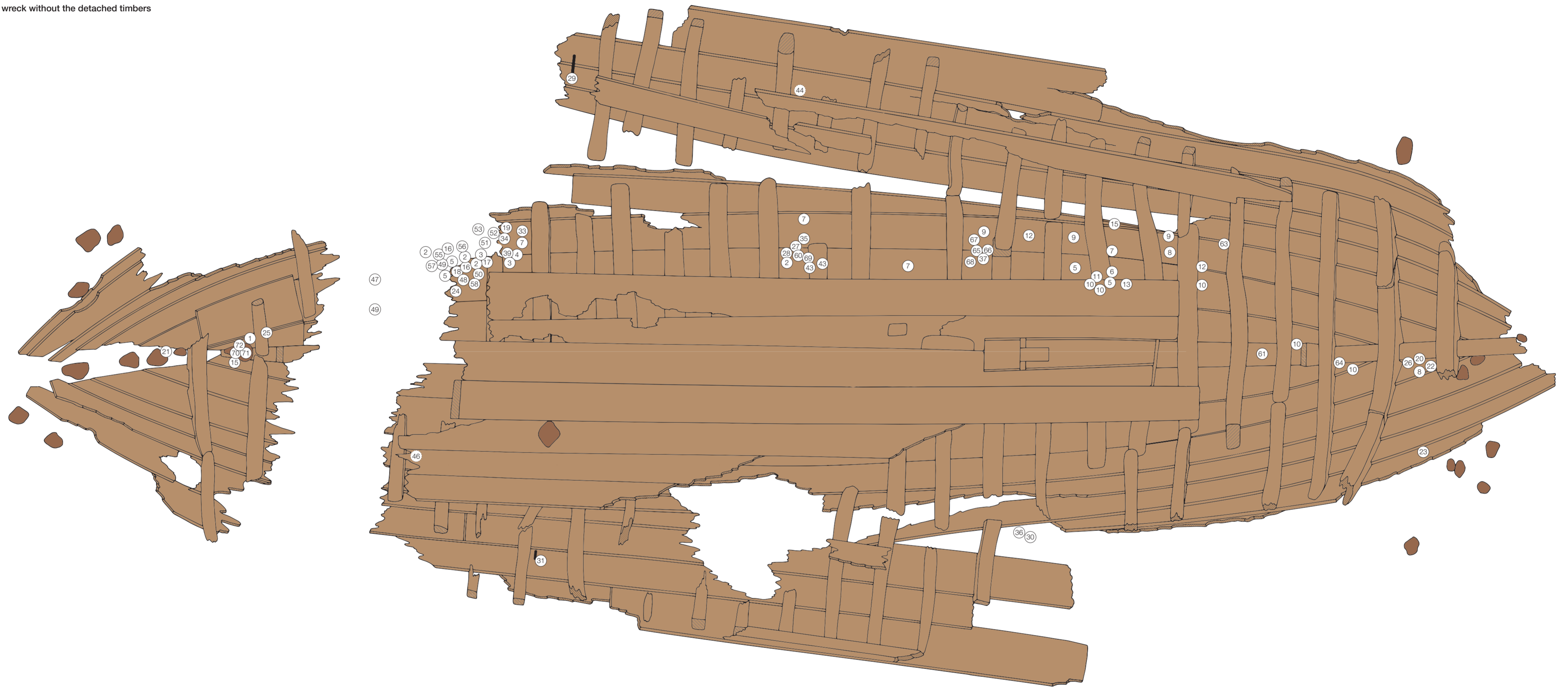
Field drawing

A. The wreck with the detached timbers.

Scale



B. The wreck without the detached timbers



Legend

- Recovered timbers
- Cross-cut wood
- Broken-off frame/plank
- 17 Find number
- Erratic stones / net weights

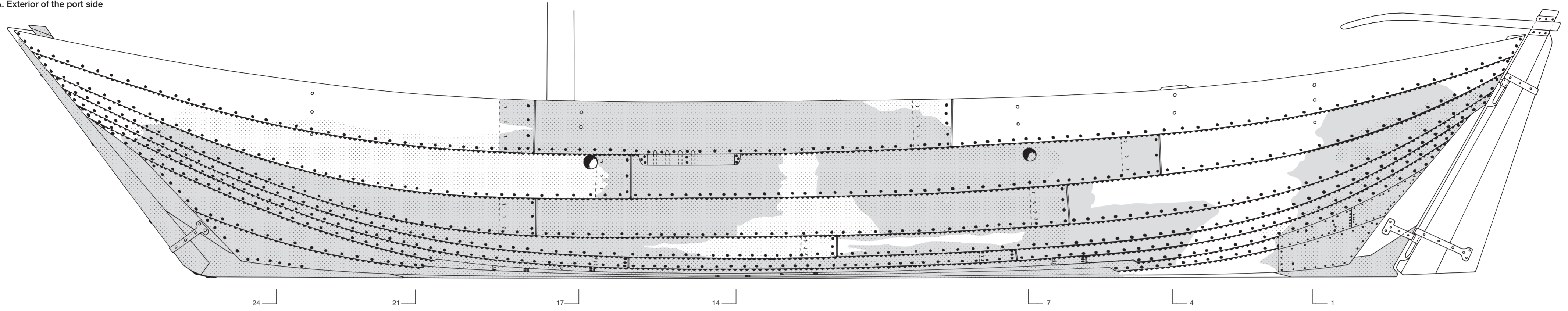
Field drawing

B. The wreck without the detached timbers and the distribution of the finds.

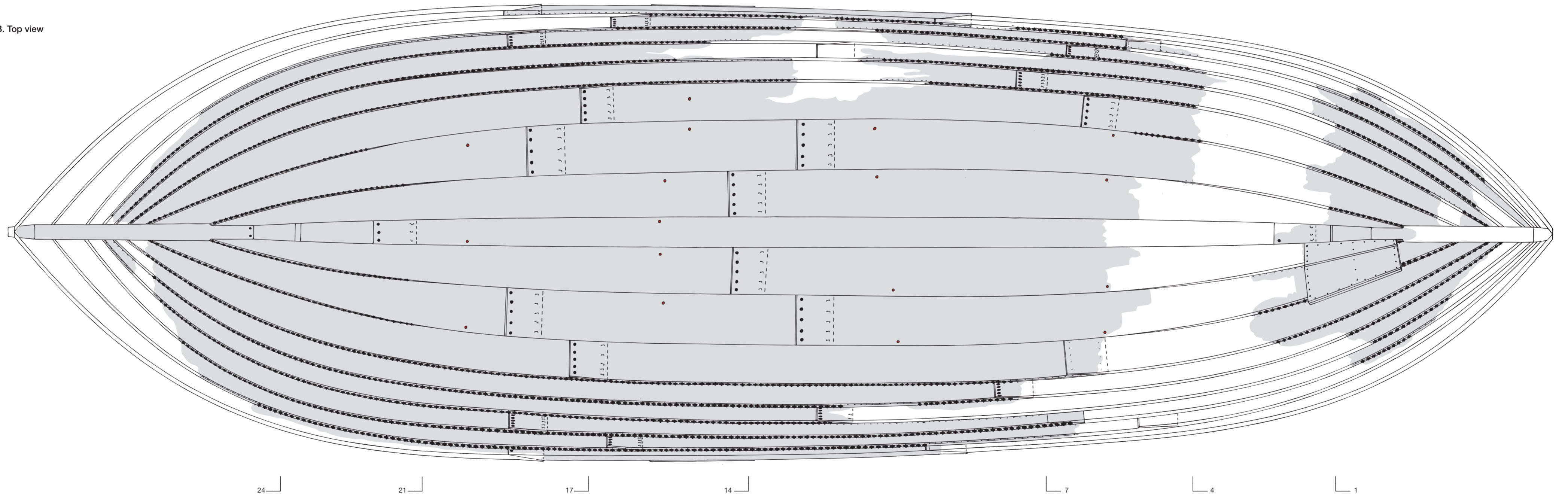
Scale

0 m 1 m

A. Exterior of the port side



B. Top view



Legend

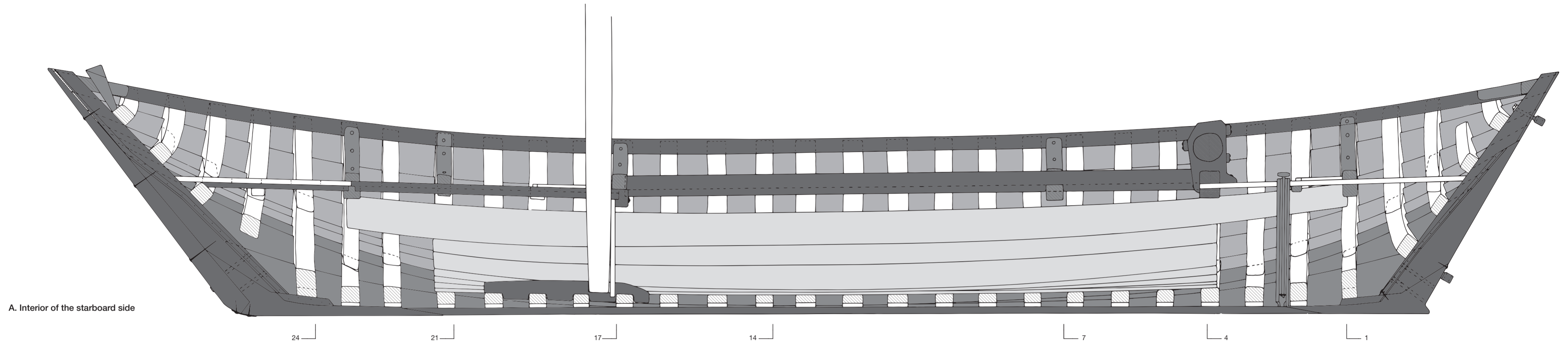
- Recovered parts of the starboard side (in A); all recovered parts
- Recovered parts of the port side
- Nails of the clinker-built sides
- Clamped moss caulking on the outside
- Head of a rosebolt
- Nailhole plugs left by temporary framing
- Frame number

Reconstruction drawings

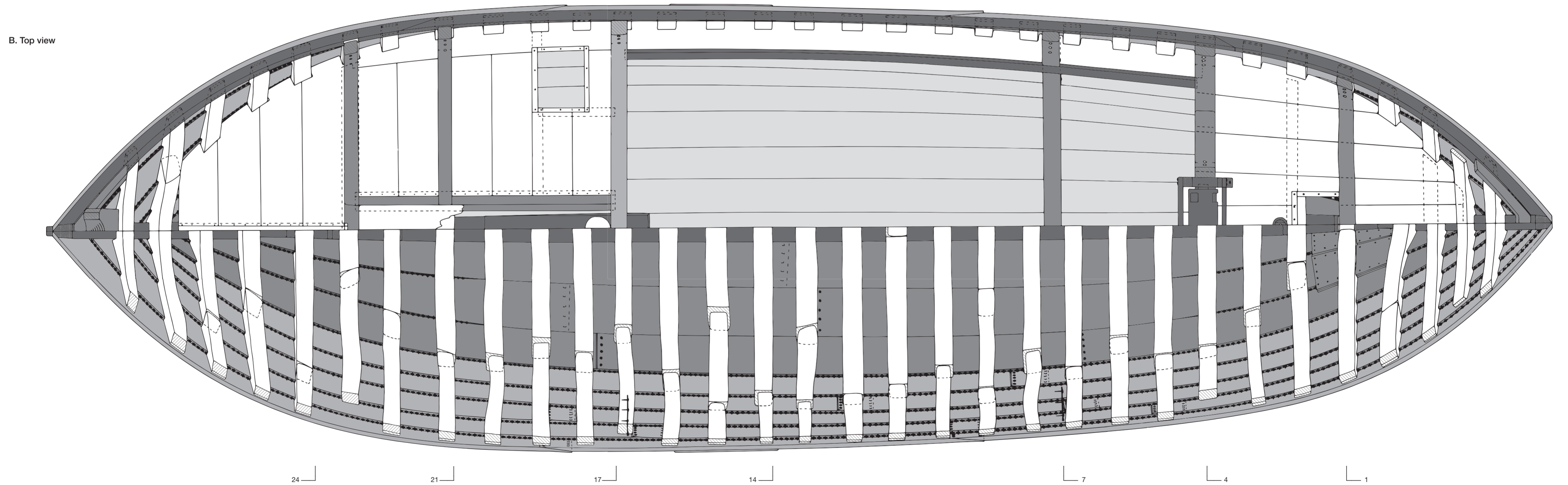
- A. Exterior of the port side, combining the recovered parts of the starboard and port sides, the channel for holding the shrouds, the two rosebolts and the repair planks at the stern.
- B. Top view of the shell with the plank scarfs, the recovered parts, the repair planks, the seams of the clinker-built shell closed with clamped moss caulking, the transition of carvel- to clinker-built construction of the shell and the trenails of the temporary frames used during the construction of the bottom.

Scale

0 m 1 m



A. Interior of the starboard side



B. Top view

Legend

- Keel plank, stern- and stem hooks, coaming, inwale, windlass, mast step
- Bottom planking, stringers, topside crossbeams with deck knees, mast support beside the stem, V-shaped timbers joining the port and starboard inwales
- Planks of the sides
- Ceiling boards
- Frames, deck planks, gangway
- Cross-cut wood
- Frame number

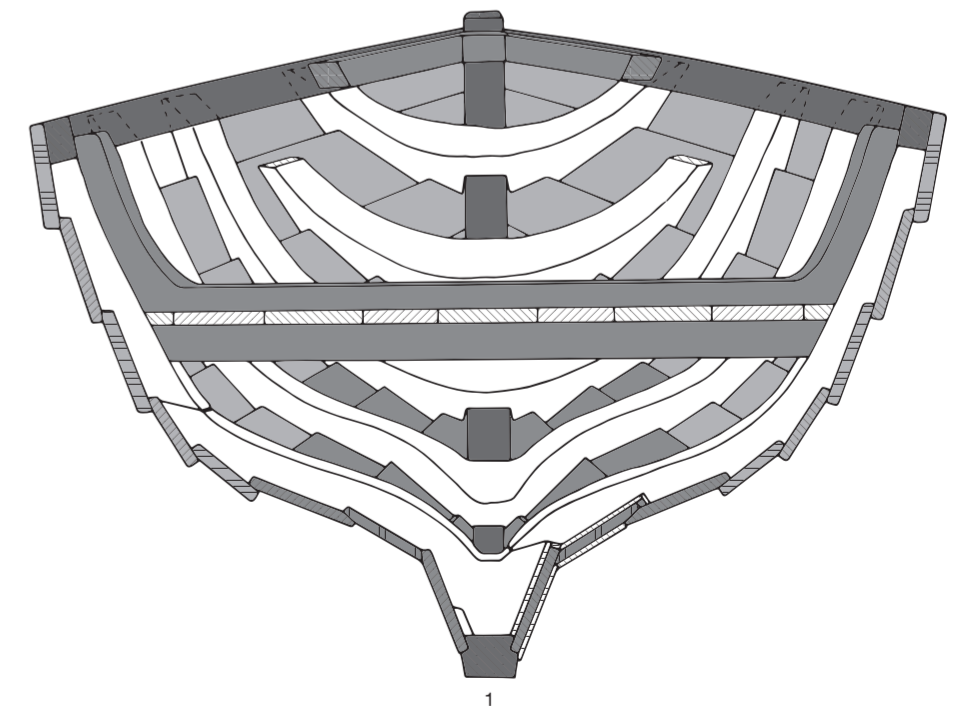
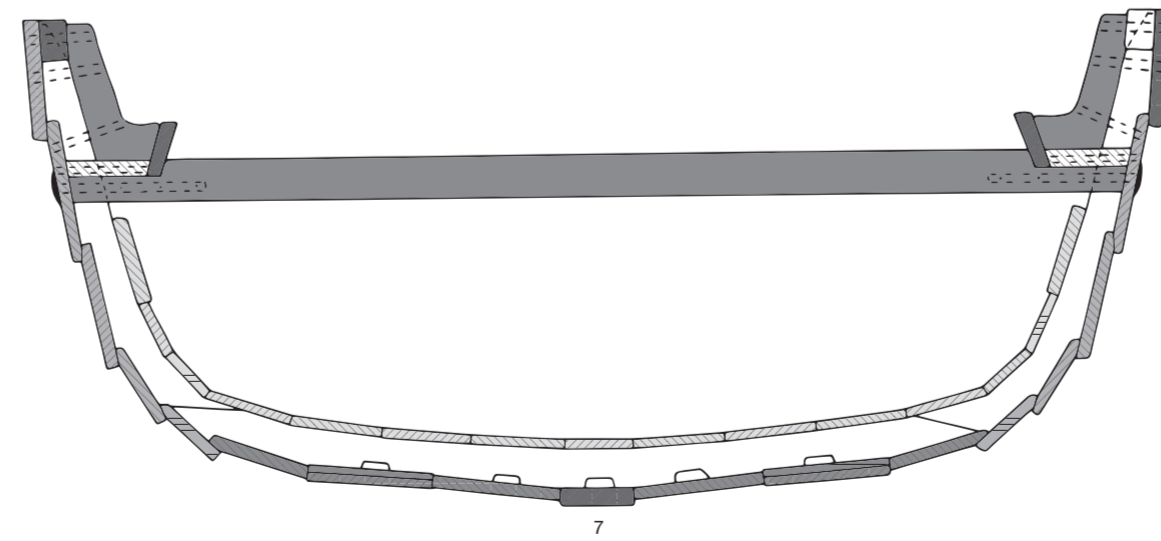
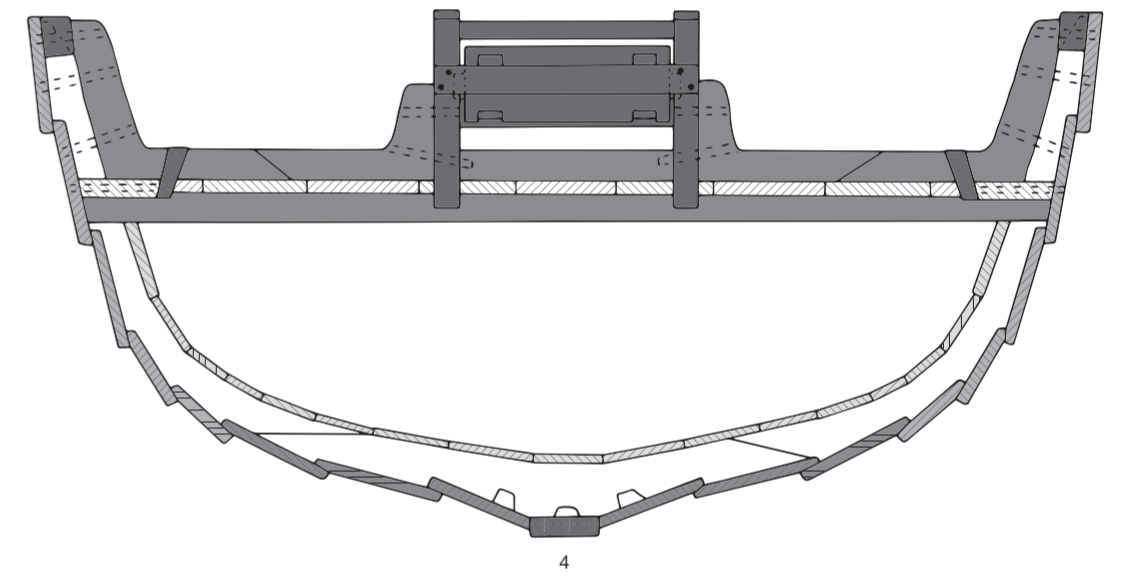
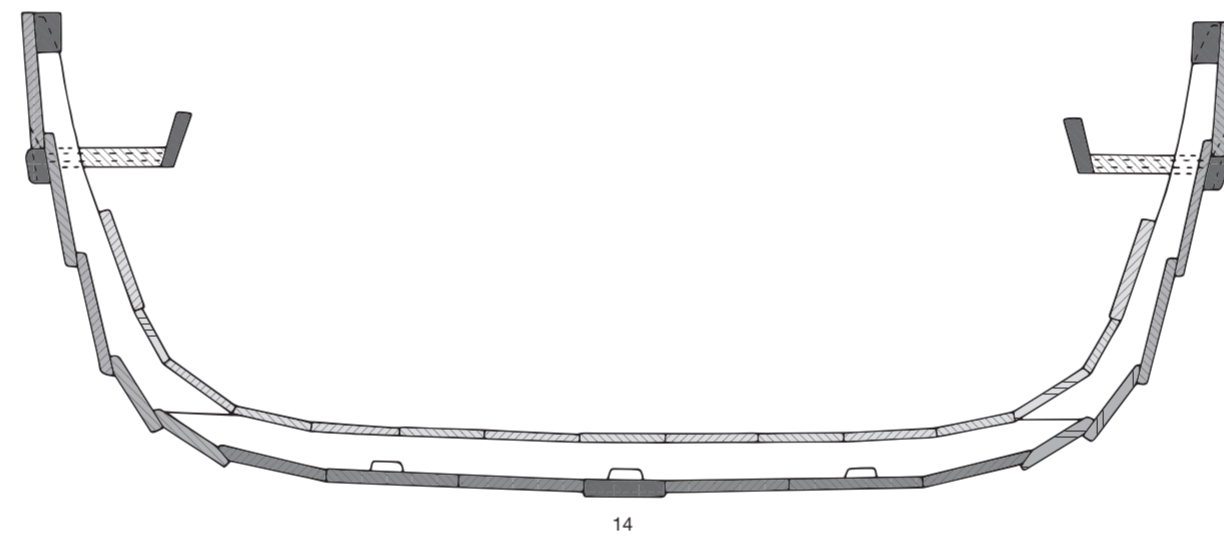
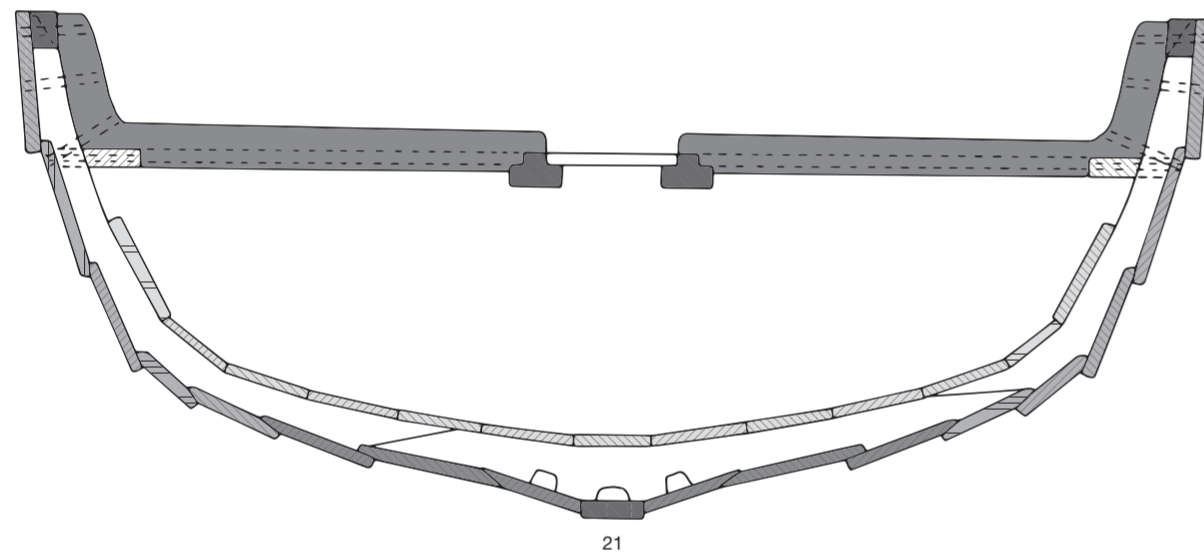
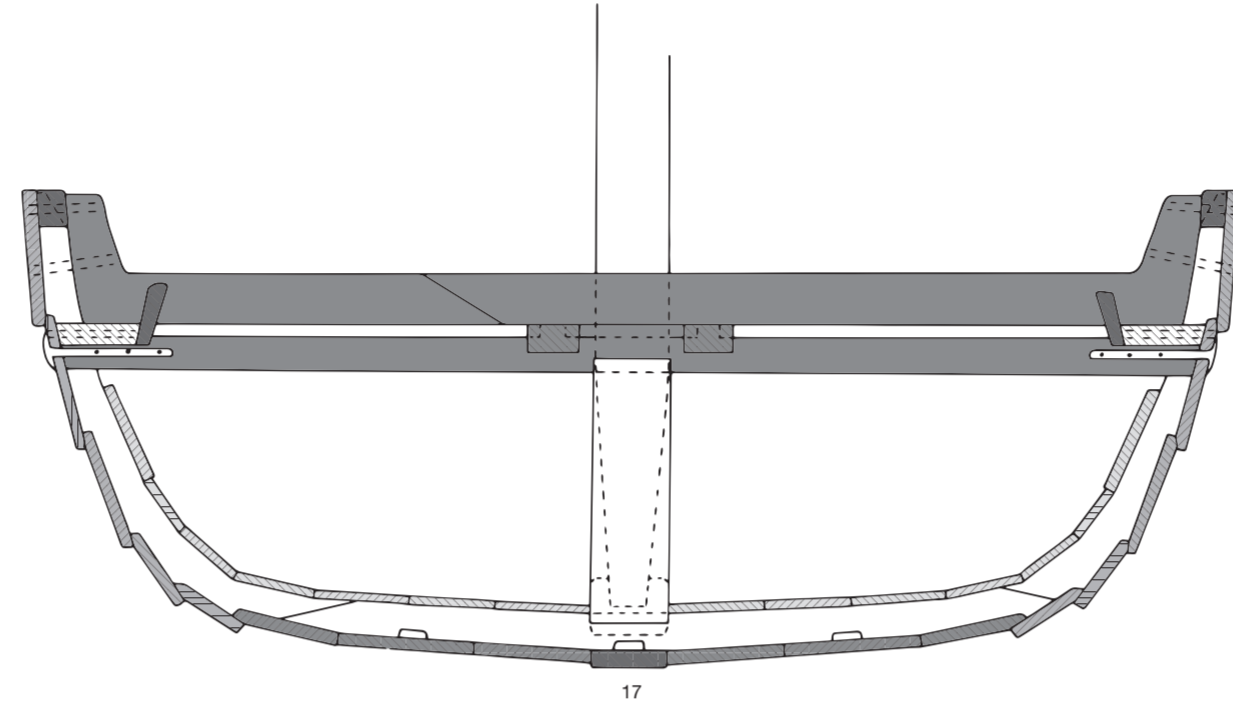
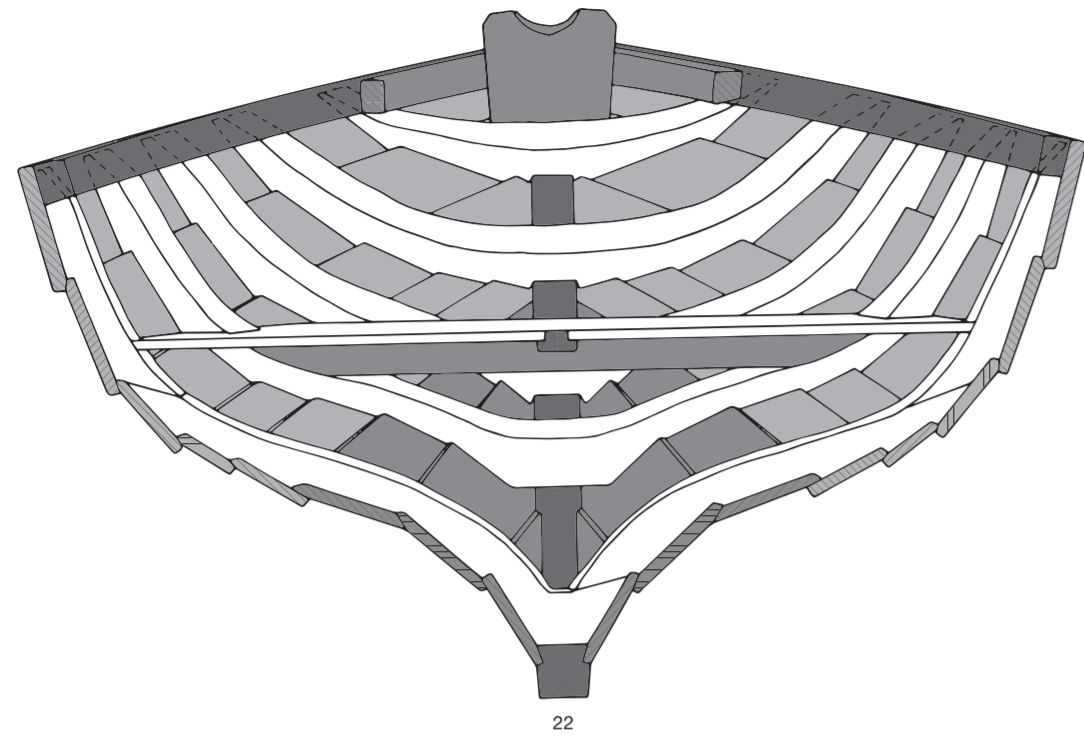
Reconstruction drawing

- A. Interior of the starboard side.
- B. The deck plan (starboard) and the frame plan (port).







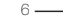
Scale

0 m 1 m

C. Cross-sections



Legend

-  Keel plank, stern- and stem hooks, stern- and stempost, coaming, inwale, windlass
-  Bottom planking, cross connections / crossbeams, topside crossbeams with deck knees, V-shaped timbers connecting the port and starboard inwales
-  Planking of the sides
-  Ceiling
-  Frames, deck planks, gangway, mast
-  Cross-cut wood
-  Frame number

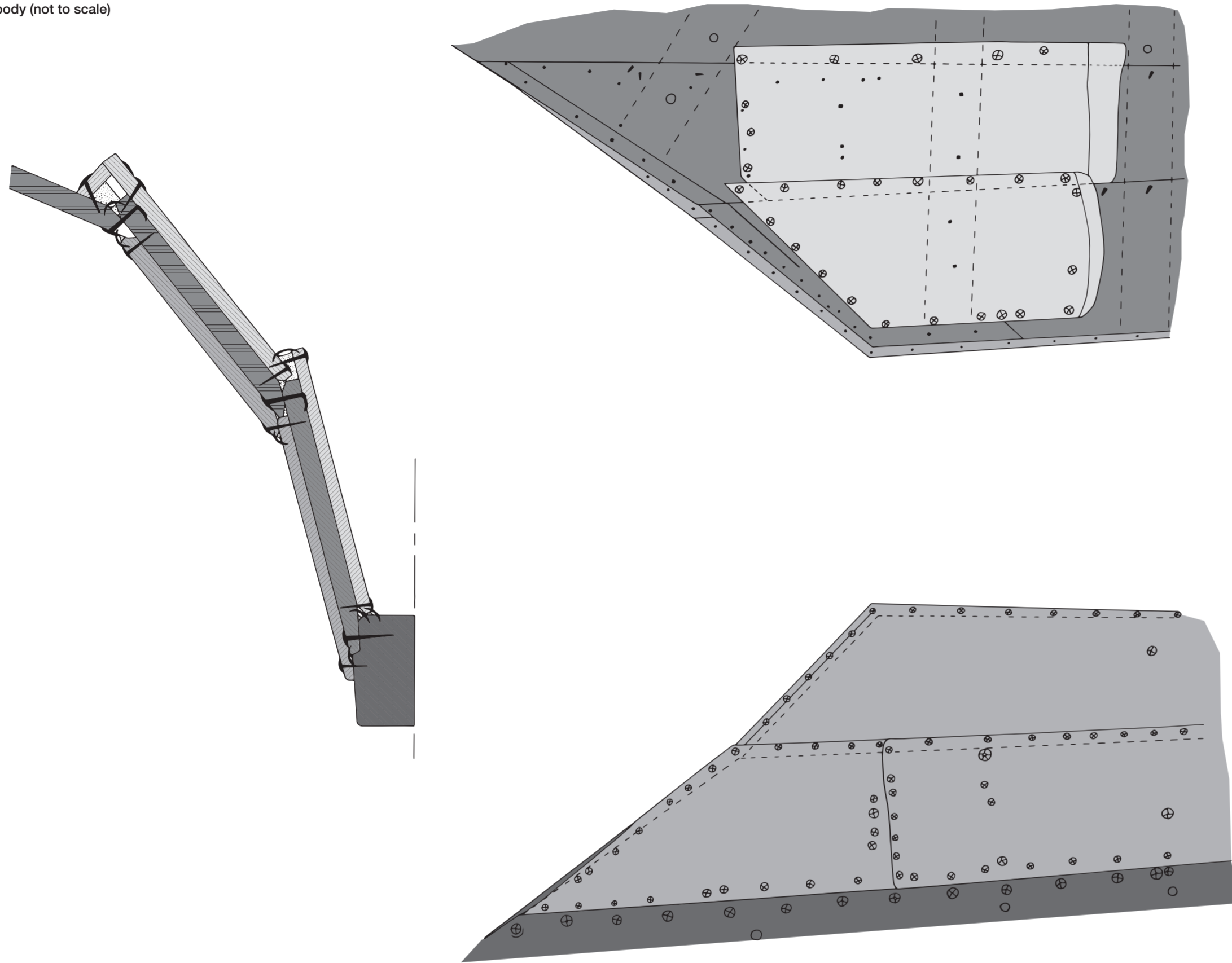
Reconstruction drawing

C. Cross-sections.

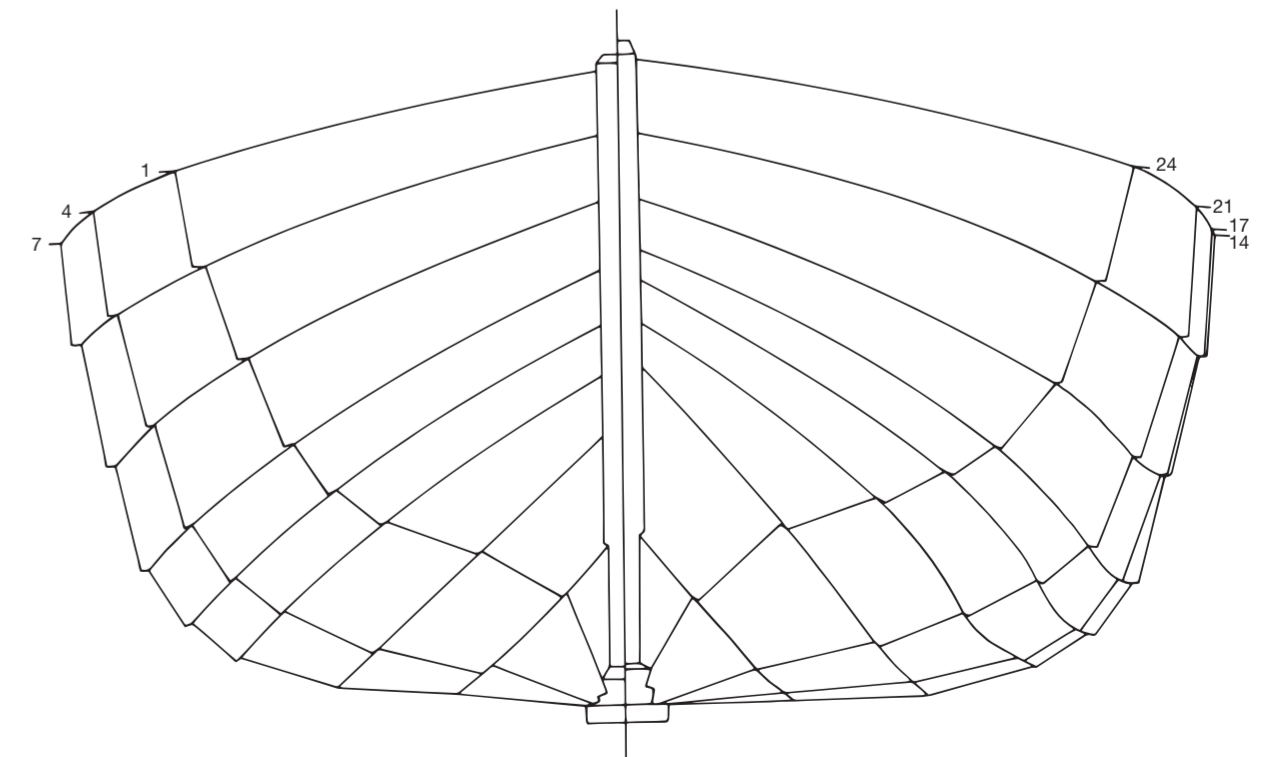
Scale








D. Repair to the afterbody (not to scale)



E. Lines/planking drawing



Legend

-  Stern hook
-  Bottom planking
-  Repair planks on the outside
-  Repair planks on the inside
-  Cross-cut wood

Reconstruction drawing

- D. Repair to the afterbody (not to scale).
- E. Lines/planking drawing of the upper edges of the clinker strakes.
On the right, interior of the afterbody; on the left, of the forebody.

Scale

